



LEADER IN ENGINEERED FINISHING SOLUTIONS

Col-Met Engineered Finishing Solutions  
2975 Discovery Blvd. Rockwall, TX 75032 Toll-Free 888-452-6684 Email sales@colmetsb.com  
www.colmetsb.com





## OUR MISSION

Col-Met's mission is to bring the highest quality products, innovative solutions and engineered products to its distribution network with a relentless pursuit of maintaining customers for life.

Col-Met values innovation, extensive research and testing, craftsmanship and building partnerships where ever we go.

Our business is more than manufacturing quality products. We have united the most brilliant and gifted engineers from the industry, a creative product innovation team, exceptional customer service experts and strong leaders who remain committed to serving our distribution partners as they grow and their needs expand.



*Manufacturing Facility in Rockwall, TX*

It takes more than leadership, focus and dedication to stay ahead in the competitive world of spray booths and finishing systems. We know that it takes something extra, something genuine to step to the forefront of the industry and hold that position.

You may call it great customer service. You may call it the best engineered finishing solutions around. We call it **Col-Met Integrity.**

Col-Met operates ethically and honestly with strong leadership and strong principles, every single day. It's our way of doing business. We consistently allocate the resources needed for continuous product design and manufacturing improvement to advance our engineering capabilities, to elevate our quality control standards, to ensure the best practices for our employees, and to encourage research and study of our craft.

No single person at Col-Met has all the answers. It is a truly collective effort that helps produce the solutions that will perfectly fit our customers' needs. This group-think approach fosters a true team atmosphere among our concept developers, electrical engineers, equipment designers, sales engineers, service representatives and everyone else who works at Col-Met Engineered Finishing Solutions.



**ENGINEERED  
FINISHING  
SOLUTIONS**

## EXCEPTIONAL SUPPORT & SERVICE

**We challenge ourselves, and each other, to always make Col-Met an even better company than it was the day before.**

We believe in a strong, vibrant and influential distributor network. Col-Met is committed to delivering the best service any way we can, and we constantly stress how valuable our distributor relationships are to our success. While our headquarters may be in Texas, our distributor network is a true expansion of this company, and we're very proud of that.

We work very hard. We challenge ourselves, and each other, to always make Col-Met an even better company than it was the day before. We strive to provide the best engineered finishing solutions that will perfectly fit your needs.

Col-Met has always taken great pride and care in offering a select line of the most energy-efficient, high-quality and environmentally-optimized spray booths and finishing systems to meet the broadest range of applications. From "floor model" bench spray booths to complete industrial finishing systems, Col-Met understands that every finishing operation has specific needs and requirements necessary to get the job done right.

We are your industrial finishing consultant and your business partner, so our relationship with you does not end at the time of purchase. With installation startup and service, technical support, product training and maintenance, and sales assistance available, Col-Met is ready when you need us most. We always have time for your questions and concerns, or even to discuss the finishing industry and what the future may bring for you.

Col-Met Engineered Finishing Solutions is delivering more than leading products to a growing industry; we are giving you the industrial finishing solutions and service flexibilities you need to grow your business. We have the knowledge, the capabilities and the team that's ready to get to work. And we are utilizing these attributes to build better products for you. **Now that's the sign of a true leader.**



PAINT BOOTHS



POWDER BOOTHS



OVENS



AMUs



WASHERS

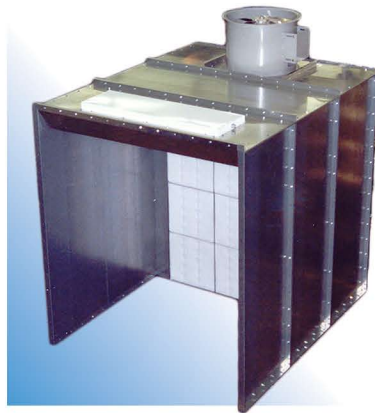


## PAINT BOOTHS - INDUSTRIAL

Col-Met manufactures and produces a diverse and comprehensive line of industrial finishing equipment to meet the growing demands of the market place. Our designs are well suited for batch and automated production systems and are built to last with premium components and performance boosting configurations. Col-Met's paint booths are fully customizable and can be designed and built in a variety of sizes and configurations to meet your specific needs.

### OPEN FRONT BOOTHS

Open Front Booths offer an economical solution for your batch or conveyORIZED production application. Our open front booths are designed with heavy duty construction utilizing simple and effective design elements. Air flow is drawn in through the open front, across the work area and exhausted through a filter bank in the back of the booth. The dry arrestor filters trap the airborne overspray particles before the filtered air is discharged through the exhaust system and into the atmosphere. Design elements and configurations are flexible and can be customized to meet the demands or unique applications of our customers.

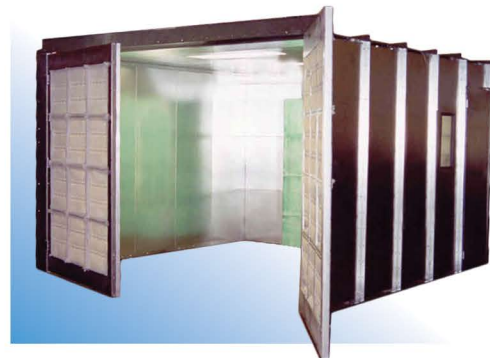


### OPEN FRONT BENCH BOOTHS

A structural variation of our Open Front Booth design, Col-Met's Open Front Bench Booths are also suitable for both batch-type and automated production systems. Air flow is drawn in through the open front, across the painter and parts being coated, and then exhausted through a filter bank in the back of the booth. Our Open Front and Open Front Bench Booths are engineered for versatility, high efficiency and added convenience.

### ENCLOSED INDUSTRIAL BOOTH

For a superior quality finish, our Enclosed Industrial Booths are highly efficient at managing air flow and productivity. Air flows in through the filtered double entry doors in the front of the booth, passes through the booth's working area, and into the filtered exhaust chamber located in the rear of the booth. This filtered exhaust air is drawn through the exhaust plenum and discharged upward into the atmosphere through the exhaust stack. Col-Met has designed four standard height configurations to meet the varying needs of our customer applications.



### EXHAUST CHAMBERS/BENCHES

The industrial exhaust chambers designed by Col-Met's engineering team remove harmful vapors and fumes with efficiency and expediency. With a wide range of design configurations, our exhaust chambers can accommodate the majority of production requirements. Air flow is cleaned and filtered throughout the work area and removed through a tube axial exhaust fan for maximum efficiency. Industrial exhaust chambers can be modified to add components like air replacement units and intake chambers as well as other electrical components.



### PAINT MIX ROOMS

Providing a safe and controlled environment for mixing paint was our chief objective when designing our paint mixing rooms. Built with durable construction that maximizes air flow distribution, your employees are protected from harmful vapors and toxins. Air flow is directed via the filtered air intake and exits through the exhaust stack out of the building. Air moves in a downward direction in a continuous flow providing optimal ventilation for personnel. Paint mixing rooms also feature a lighting fixture for maximum visibility and efficiency.

For more details on our industrial spray booths, please visit [www.colmetsb.com](http://www.colmetsb.com).



ETL certification available on certain models and sizes.



## PAINT BOOTHS - AUTOMOTIVE

Col-Met applies practical engineering and innovative paint technology to design and manufacture industry leading automotive paint booths. Our high performance booths offer your shop or facility an easy to install, efficient and effective solution regardless of whether you're using a solvent or water-based coating.

### EZ CLASSIC CROSSDRAFT

Col-Met has mastered the art of simplicity and easy installation with its introduction of the EZ Classic line. The EZ Classic Crossdraft booth is both economical and efficient for use in automotive, industrial and wood applications. The air flow moves horizontally across the work area and to the back of the booth for filtered expulsion. EZ Classic Crossdraft spray booths are offered in a number of sizes and configurations such as pressurized, non-pressurized, solid back, reverse flow and drive through designs.

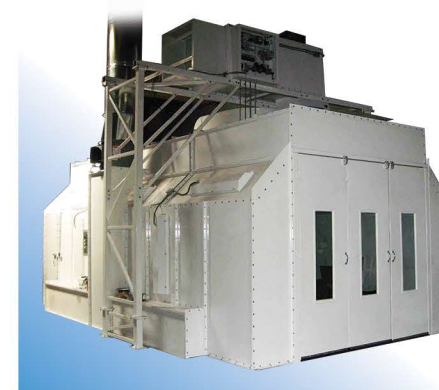


### EZ MODIFIED DOWNDRAFT

Providing a clean and healthy work place, Col-Met's EZ Modified Downdraft spray booths allow for easy maintenance and pressurization. The booth intakes fresh air from the cleaner upper levels of the shop through a filter bank located in the booth ceiling, near the product doors. The filtered air is drawn down through the booth to an exhaust filter system at the opposite end. An optional pre-filtered plenum for additional intake air filtration is also available. EZ Modified Downdraft spray booths are offered in a number of sizes and configurations such as pressurized, non-pressurized, solid back, reverse flow and drive through designs.

### EZ SIDE DOWNDRAFT

Designed for shops that lack the ability to install a pit, the EZ Side Downdraft booth is a perfect solution. The EZ Side Downdraft Booth efficiently draws filtered ceiling air down through the booth, supplying the area with clean, filtered air. Instead of drawing the air into a pit, filtered air runs vertically down the walls of the booth on both sides. Overspray is contained and prep time is reduced while providing a completely safe environment that is free of harmful toxins. EZ Side Downdraft spray booths are offered in a number of sizes and configurations such as pressurized, non-pressurized, solid back and drive through designs.



### EZ PIT DOWNDRAFT

The EZ Pit Downdraft spray booths are popular with automotive applications as they bring air from ceiling intake filters and disperse clean, fresh air from the top of the booth to the bottom. The filtered air is drawn down and across the product through exhaust filters in the pit located in the floor. This provides efficient overspray control that increases transfer efficiency and also provides a much healthier workplace environment. EZ Pit Downdraft spray booths are offered in a number of sizes and configurations such as pressurized, non-pressurized, solid back and drive through designs.



### FINISHING PREP STATIONS

Col-Met offers a flexible and controlled environment with our finishing prep stations designed for automotive work. For prepping and painting vehicles, the EZ Limited Finishing Prep Station optimizes space and efficiency while providing a clean, safe and effective work environment. Our prep station uses a pressurization fan to bring in fresh air from upper levels into the prep station. The air is filtered through an exhaust plenum located at the back of the workstation and ultimately expelled outside through an exhaust fan. This design allows for easy addition of a heated air makeup unit.

For more details on our automotive spray booths, please visit [www.colmetsb.com](http://www.colmetsb.com).



ETL certification available on certain models and sizes.

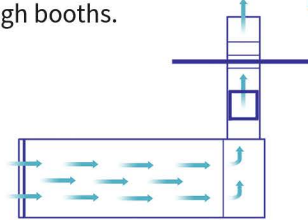


## PAINT BOOTHS – TRUCK & LARGE EQUIPMENT

The engineering team at Col-Met has enhanced the design of our large size spray booths for vehicle, large equipment, and other high-capacity industrial finishing applications. By using structural steel for every 10 feet of length as well as 14-gauge stiffening panels, we have strengthened the booth integrity while providing efficient space to accommodate larger vehicles. Our truck and large equipment booths feature full illumination and exceptional ventilation for a professional finish every time.

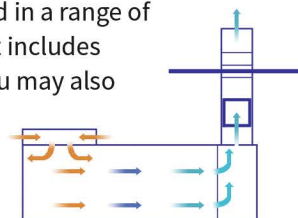
### CROSSDRAFT

A crossdraft booth design utilizes simplicity in its configuration while providing an economical and efficient solution for coating larger industrial equipment and trucks. It also works well for wood applications. The Col-Met Crossdraft style paint booth optimizes air flow with an exhaust fan that pulls clean, filtered air through the work area for exhaust extraction at the rear of the booth. Crossdraft booths are offered in a range of structural design and integrity construction that includes Standard Duty, Heavy Duty and Xtreme Duty. You may also choose from pressurized and non-pressurized, reverse flow, solid back and drive through booths.



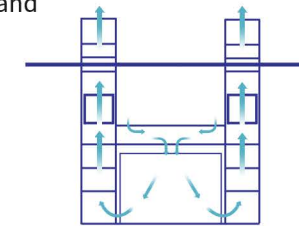
### MODIFIED DOWNDRAFT

You can count on improved performance and enhanced efficiency when you choose a modified downdraft paint booth for trucks and large equipment. The Col-Met Modified Downdraft booth improves air flow by directing air from intake filters located at the ceiling. They effectively draw the air down and back towards the end of the booth enclosure protecting your equipment with clean, fresh air that is free of particles. Modified Downdraft booths are offered in a range of structural design and integrity construction that includes Standard Duty, Heavy Duty and Xtreme Duty. You may also choose from pressurized and non-



### SIDE DOWNDRAFT

Shops or facilities in search of the most economical solution will appreciate the side downdraft paint booths. With this configuration, there is no need to install a pit while still benefiting from the versatility, functionality and efficiency of a downdraft paint booth. The air is pulled from intake filters at the ceiling where it is directed down along the sides of both walls. This allows for a safer work environment that effectively removes harmful paint fumes while improving the painting and finishing process. Side Downdraft booths are offered in a range of structural design and integrity construction that includes Standard Duty, Heavy Duty and Xtreme Duty. You may also choose from pressurized and non-pressurized, reverse flow, solid back and drive through booths.

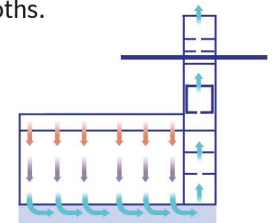


	Standard Duty	Heavy Duty	Xtreme Duty
14'-20' Width	Yes	Yes	Yes
> 20' Width	No	No	Yes
26'-64' Length	Yes	Yes	Yes
> 64' Length	No	No	Yes
Increments in Length	2'	2'	Custom
Support for Booth Mounted AMU	No	Yes	Yes
Support for Conveyor or Crane Slot	No	No	Yes
Support for Man Lifts	No	No	Yes
Complies with OSHA and NFPA Regs	Yes	Yes	Yes
Construction	10-Gauge	W6x9 Beam	I-Beam



### DOWNDRAFT

Downdraft booths are among the most popular as a result of their superior air flow control. By managing overspray more efficiently and reducing prep time, downdraft booths redirect fresh air through a filtered booth ceiling for an enhanced work environment. The air moves down to the bottom of the booth where it is exhausted in an efficient, effective way. These booths can also be equipped with a pre-filtered plenum, pressurized intake plenum or air replacement unit depending on your specific application or requirements. Downdraft booths are offered in a range of structural design and integrity construction that includes Standard Duty, Heavy Duty and Xtreme Duty. You may also choose from pressurized and non-pressurized, reverse flow, solid back and drive through booths.



For more details on our truck and large equipment spray booths, please visit [www.colmetsb.com](http://www.colmetsb.com).

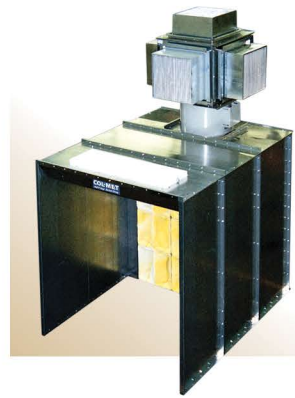


## POWDER BOOTHS

Our powder booths have served as the industry standard for more than a decade. With a diverse line of powder booth configurations, we offer proven solutions for a wide range of applications and customer needs. Our booth designs consist of batch, cartridge batch, collector-style, pass through and lab powder booths.

### BATCH POWDER BOOTH

The Col-Met batch powder booths are designed to make efficient use of shop space while still delivering a proven solution for small and manual powder applications. Our batch powder booths are easy to install and maintain with a spray-to-waste design. Air flow is directed from the open front area to a filtered exhaust plenum in the rear. Our 3-stage filtration system optimizes air quality to provide the safest and most efficient working environment.



### CARTRIDGE BATCH POWDER BOOTH

With an open front design, Col-Met's cartridge batch powder booths are perfect for small to mid-size powder applications. To ensure cartridge filters remain clean, this booth is built with a purge control feature, which assures the safe operation of the coatings enclosure by maintaining the air flow at design levels. During operation, powder accumulates on the cartridge filters, and as the cartridge filters load, air flow decreases and negative pressure rises within the air handler. A timer activates a system of air purging valves that clear the cartridge filters of accumulated powder to ensure maximum filter life.

### PASS THROUGH POWDER BOOTH

Col-Met offers a pass through powder booth ideally suited for conveyORIZED coating operations looking for the most efficient system option. These booths are precision engineered to provide access for coating from booth sides using manual spray equipment, automatic spray equipment, or both. The conveyor slot in the top of the booth allows the racked parts to pass through the spray area with the conveyor installed above the booth. Overspray is minimized and productivity is enhanced while parts are handled in the most efficient manner possible. The booth also features a collector module that can be easily rolled away for color change and has additional modules available for multiple color operations.



### LAB POWDER BOOTH

The versatile lab powder booth is engineered for small batch, manual applications and includes a compact plenum design offering a larger work area. The included VFD allows for optimum air flow control. Extremely quiet and environmentally friendly, this booth is a perfect solution for operations with limited finishing space.

For more details on our powder booths, please visit [www.colmetsb.com](http://www.colmetsb.com).

## OVENS

### BATCH OVEN

When you want to maximize your use of shop space and still accommodate a variety of production runs, batch ovens will provide the best solution. Designed for variability, batch ovens are well suited for production applications that vary in shape, size and volume.



### PROCESS OVEN

Process ovens serve a specific role for parts as they move through your conveyance system for heating, preheating and curing. While batch ovens can require substantial labor and limited production ability, process ovens provide the most economically advantageous solution for a variety of applications. They come in a number of configurations depending on your available floor space. Each oven is designed to regulate and balance temperatures and air flow to help produce the highest quality finish. Process ovens are made of heavy duty construction with insulated panels to promote a highly efficient solution to your high production products.

### IR DRYING OVEN

The IR drying oven, custom designed and fabricated by Col-Met, is constructed of 2-inch thick insulated panels and is fully shop assembled and tested. With its heavy duty construction and efficient heating mechanisms, the oven is designed to mount on the plant floor with conveyORIZED parts moving through the drying chamber. The chamber is equipped with a centrally located exhaust fan to evacuate approximately 500 CFM. A VFD motor controller allowing for electronic speed adjustment will power the fan.



For more details on our ovens, please visit [www.colmetsb.com](http://www.colmetsb.com).



ETL certification available on certain models and sizes.



## PREPARATION EQUIPMENT

Col-Met engineers and designs custom preparation equipment to thoroughly clean and prepare your product prior to coating. Whether you require chemical or mechanical preparation, we can design and build a complete washer system to meet your specific needs. Our custom built preparation systems include:

- >> Pass Through Chemical Washers
- >> Blast Booth Enclosures
- >> Sanding and Grinding Booths
- >> Wash Booths
- >> Prep Stations



### PROCESS WASHERS

Col-Met's washer systems have been designed in conjunction with chemical suppliers to assure they meet the standards associated with the latest in chemical pretreatment technology. Together, we have designed our washers around minimizing maintenance and increasing machine life. They are complete with the necessary stiffeners and structural support for the conveyor. A sloped roof design allows condensed water to run down the side walls and away from any parts.

Our skilled engineers will design a conveyor pass through system specific to your needs, taking into consideration the size of the parts and the time allotted for the parts to pass through the washer.

For more details on our preparation equipment, please visit [www.colmetsb.com](http://www.colmetsb.com).

## AIR MAKEUP UNITS

Col-Met's EZ Heat Air Makeup Units are equipped with 1.5 to 4 mil BTU Eclipse™ burners that deliver conditioned and filtered heated air evenly throughout the booth. Precision-controlled to minimize temperature variations, each AMU effectively removes particulates from the air that can negatively affect the quality of a finish. Capable of providing an energy savings of up to 40%, each AMU features self-adjusting profile and inlet dampers that modulate air flow as it passes over the burners regulating air pressure and fuel consumption for a clean, fuel-efficient burn. Each AMU comes standard with a UL-listed control panel, VFD control for the exhaust fan, and digital microprocessors. EZ Heat units can be retrofitted to fit any existing booth setup, and are available for indoor and outdoor applications, and in either vertical or horizontal configurations.

- >> 8,000 CFM to 40,000 CFM
- >> Natural gas or propane gas
- >> Forced dry cure or recycle cure
- >> Optional economy "prep" mode



For more details on our AMUs, please visit [www.colmetsb.com](http://www.colmetsb.com).



## COMPONENTS & ACCESSORIES

Whether you want to improve lighting, upgrade your fan or install electrical control panels, Col-Met offers high quality components and accessories with every spray booth and finishing system. We offer a complete booth accessory line designed to increase productivity while ensuring safety, efficiency and versatility. Each electrical component and accessory is easy to install, and for added performance, are designed to be fully integrated to the performance of your finishing system.

### CONTROL PANELS

Col-Met provides a number of control options for your spray booth such as touch screen and PLC-based, motor starters, multi-fan, and VFD controls. Each of our standard control panels are delivered pre-wired with a single power connection point to make installation fast and easy. Intuitive control displays allow for easy navigation and simplicity while working.



### RP PAINT ARRESTORS

RP Paint Arresters are disposable paint overspray collectors that efficiently trap paint solids before they reach the exhaust stack, also known as a paint booth filter. Col-Met manufactures high efficiency paint arresters which have a custom designed layering system to increase the overall efficiency of the booth. Available in Filters are lab tested with over a 99% particulate removal efficiency.



### LIGHTING

Proper lighting plays an important role in achieving a high quality finish. Col-Met offers several lighting solutions that will enhance the lighting in your booth. Whether you choose LED lighting or fluorescent, our light fixtures feature a slim design with powerful illumination which is suitable for any spray booth. Each light is made from 18-gauge steel construction and are powder coated in white to maximize the light output while ensuring safety and an enhanced spray environment. Our lighting fixtures meet the appropriate ETL listings and maintain their illumination quality by being vapor and dust proof.



### DUCTWORK

At Col-Met, we provide high quality galvanized steel ductwork and other needed accessories to properly exhaust your finishing equipment. The components come in a wide variety of configurations depending on your paint booth structure and features. Our ductwork construction provides superior protection against destructive elements including corrosion and rust.



### FANS

Whether you are looking for ducted or non-ducted applications, Col-Met supplies fans that provide efficient and reliable air movement. Featuring a continuous duty motor with an airtight seal, our tubeaxial fans ranging in size from 12 to 42", will fit both industrial and commercial applications.

### UTILITY ARM PARTS HANGERS

This all steel, heavy-duty 300 lb. rated parts hanging system is designed to span across a standard booth and stores away to 5". Powder coated white.

- >> Optional Round Extension for Utility Arm Parts Hanger
- >> Optional Double Part Rest Extension for Utility Arm Parts Hanger

### FOLD AWAY WORK TABLE

18-gauge galvanized steel tabletop work area, 30" wide x 18" deep, that folds away to less than 2-3/4" and is designed to bolt into a standard 30" wide wall panel. Powder coated white.

### SPRAY GUN RACK WITH SHELF

18-gauge galvanized steel shelf, 30" wide x 10" deep, designed to bolt into a standard 30" wide wall panel. Powder coated white and features a hanging rod and multiple gun hangers.

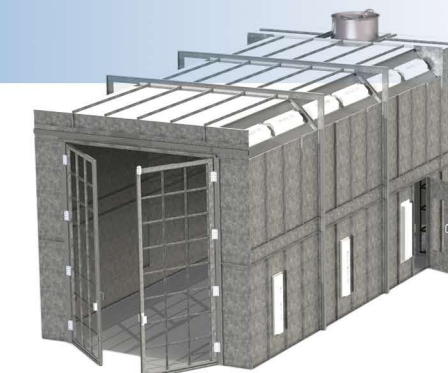
### PEELABLE BOOTH COATING

Environmentally-friendly, waterborne coating that will protect your paint booth walls, floor and ceiling from overspray. Easily removed for reapplication, this high-solids formula is available in both white and semi-transparent clear.

For more details on our components and accessories, please visit [www.colmetsb.com](http://www.colmetsb.com).

## CUSTOM CONFIGURATIONS

Our Engineered Products Group will consult with you and make specific recommendations for those special projects where a unique solution is required to meet your particular finishing needs. Utilizing the most advanced software, Col-Met will generate 3-D CAD designs and digital prototypes from which to work, and we know the right questions to ask beforehand so that we build the most optimal system solution just for you.



To speak to someone in our Engineered Products Group, email us at [sales@colmetsb.com](mailto:sales@colmetsb.com).