



Gel Coat and Resin Laminating Equipment

All the advanced technologies and equipment you need
for today's MACT-compliant composites applications.

Complete Line of Gel-Coat, Resin, Wet-Out, Chopper and Lamination Systems for All Your Composite Manufacturing Needs...



Binks Offers You the Very Best Production Systems...

Our total commitment to the FRP, composites, and polyester dispensing industries provides our customers with many production and environmental advantages. Our full line of MACT-compliant LEL systems, spray guns and components consistently delivers the kind of high quality, bottom-line results today's manufacturers need.

Gel Coat Systems *Better Control*

- Positive volumetric control
- Lower velocity spray
- Efficient operation
- No solvent flush
- Non atomizing technology
- Maximum mobility
- Extremely rugged production system
- Super Slave system available
- Reliable, trouble-free material delivery

Environmentally Friendly

- Low emission levels
- No catalyst fumes in workplace air supply
- Reduced waste
- Reduced over-spray
- Reduced styrene emissions

Easy Maintenance

- Long-lasting severe-duty fluid pump
- Quick disconnect catalyst pump

Binks Century LEL External Mix Guns



Binks Century LEL External Mix Gel Coat Gun is renowned for its easy operation and low maintenance. Part No. 102-3610

Binks Century LEL External Mix Chopper gun Part No. 102-3655

Binks Internal Mix LEL Chopper gun Part No. 207-12240

Catalog Index

3. Gel-Coat Application Systems - ext. mix
12:1 1 color, 12:1 2 color, 14:1 1 color
4. HVLP AA/A Gel-Coat Systems - ext. mix
12:1 1 color, 12:1 2 color
HVLP AA/A Super-Slave Systems - ext. mix
14:1 B5-D, 20:1 B6-D
5. Resin Application Wet-Out Systems - int. mix
8:1 and 12:1 Binks Unison
6. Non-Atomized Resin LEL Chopper Systems - ext. mix
4.5:1, 14:1 and 20:1 Binks Unison
7. Non-Atomized Resin LEL Chopper Systems - int. mix
Air Atomized Granite Spray Systems
Binks Grani-Tec, Binks Grani-Coat
8. Binks 10 Gallon and 2 Quart Air Atomized
Gel-Coat Systems - External mix
9. Binks BOSS High Volume Resin Pump
10. FRP and Standard Spray Gun Selection Guide
11. Spray Guns for Gel-Coat and Resin Outfits
12. Accessories for Gel-Coat And Resin Outfits
13. Catalyst, Chopper, Solvent, Resin, Tubing
and Air and Fluid Hose Chart
14. Standard Accessories and Optional Equipment
15. 108, 118, 202 and 212 Tip selection Chart
System Crossover Chart

LEL technology offers maximum resin transfer via lower velocity spray. Available in a Binks Unison Cart-Mounted model. Part No. 215-650-250TF (shown) and a Binks Unison Wall-Mounted model Part No. 215-610-250TF (not shown). Heated cart and wall mounted systems are also available.



Binks Unison 215-650-250TF system shown with optional lubricator and pan

Non-Atomized, MACT Compliant Gel Coat Application Systems

Binks Unison 12:1 - External Mix Century LEL Gel-Coat Systems - 1 color

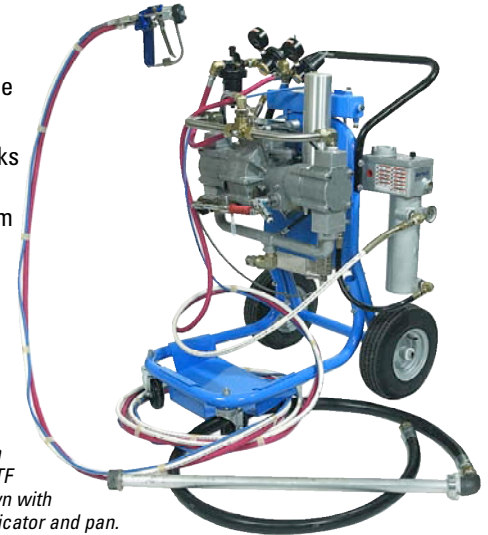
215 - 6 XX - XX X X X*

0 = Manifold
F = With Flow Meter
0 = No Siphon Kit
S = 5 Gallon Siphon Kit
T = 55 Gallon Siphon Kit
0 = No Heater Kit
H = 110V Heater Kit
J = 220V Heater Kit
00 = No Hoses
25 = 25 Foot Hose Set
35 = 35 Foot Hose Set
50 = 50 Foot Hose Set
00 = No Mounting
10 = Wall Mounted Mast
50 = Small Cart
80 = Cart, Mast, & Boom
6 = 102-3610 Binks Century LEL Gel Coat Gun

* Note: not all of the 215 combinations indicated above are available.

This practical Binks Unison gel coat system features the Binks Century LEL gel coat gun which can be used to apply gel coat in a highly efficient "soft spray".

- Extremely rugged production system
- Reliable, trouble-free material delivery
- Incorporate the Binks Unison precision proportioning system
- Cart mounted or wall mounted



Binks Unison 215-650-25HTF system shown with optional lubricator and pan.

The Systems that are available for 5 day delivery are as follows:

Binks Unison 12:1 system with no mounting.

215-600-00000

Binks Unison 12:1 system with a wall mounted mast.

215-610-00000	215-610-25JTF
215-610-50HSF	215-610-2500F
215-610-350SF	215-610-50HTF
215-610-250SF	215-610-350TF
215-610-250TF	215-610-35HSF
215-610-25HSF	215-610-35HTF
215-610-25HTF	215-610-500SF
215-610-25JSF	215-610-500TF

Binks Unison 12:1 system with a small cart.

215-650-00000	215-650-350SF
215-650-00HSF	215-650-350TF
215-650-00HTF	215-650-35HSF
215-650-250SF	215-650-35HTF
215-650-250TF	215-650-50HSF
215-650-25HSF	215-650-50HTF
215-650-25HTF	

Binks Unison 12:1 system with a cart, mast and boom.

215-680-0000	215-680-00HF
215-680-25HF	215-680-25JF

Binks Unison 12:1 - External Mix Century LEL Gel-Coat Systems - 2 color

PART NUMBER	DESCRIPTION	RATIO	PUMP	HOSES	GUN* / MIX	COLORS	HEATER
205-951-UB	Cart Mount	12:1	Binks Unison	25'	102-3610*/ext	2	--
205-951-UBH	Cart Mount	12:1	Binks Unison	25'	102-3610*/ext	2	yes
205-971-UBH	Wall Mount	12:1	Binks Unison	25'	102-3610*/ext	2	yes

*Binks Century LEL external mix spray gun - Part No.102-3610



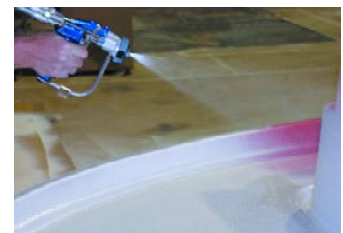
Binks Super-Slave 14:1 B5-D Non-Atomized External mix Century LEL Gel Coat Systems - 1 color

Binks Super-Slave non-atomized Gel Coat systems incorporate an integrated slave catalyst pump ensuring "locked-in" catalyst control.

- Positive volumetric control
- Lower velocity spray
- Cart mounted or wall mounted

PART NUMBER	DESCRIPTION	RATIO	HOSES	GUN / MIX	COLORS
105-5302	Wall Mount	14:1	25'	102-3610*/ext	1
105-5402	Cart Mount	14:1	25'	102-3610*/ext	1

*Binks Century LEL external mix spray gun - Part No.102-3610



Binks HVLP Air-Assist Airless Gel Coat Systems- External Mix

Binks Unison 12:1 Gel Coat Cart and Wall Mount Systems

These practical cart & wall mounted gel coat 12:1 ratio systems features the Binks 202-755 HVLP air-assisted airless gun which can be used to apply gel coat in a highly efficient "soft spray".

- Extremely rugged production system
- Reliable, trouble-free material delivery
- Incorporates the Binks Unison precision proportioning system
- Fully and easily portable

PART NUMBER	DESCRIPTION	HOSES	GUN	# COLORS
205-950-U	Cart Mount	25'	202-755*	1
205-951-U	Cart Mount	25'	202-755*	2
205-970-U	Wall Mount	25'	202-755*	1

*Binks 202-755 HVLP air-assisted airless gun



Binks Unison 205-950-U system shown with optional pan

Binks HVLP Air-Assist Airless Super-Slave Systems - External mix

Binks Super-Slave 14:1 and 20:1 Gel Coat Cart and Wall Mount Systems

Binks Century HVLP Super-Slave gel coat 14:1 & 20:1 systems feature the Binks Century Air-Assist Airless HVLP Guns. These systems incorporate an integrated slave catalyst pump to ensure a "locked-in" catalyst control.

- Positive volumetric control
- Lower velocity spray
- Maximum mobility

PART NUMBER	DESCRIPTION	RATIO	PUMP	HOSES	GUN
105-1358	Cart Mount	14:1	B5 D Super-Slave	25'	102-2500^ HVLP
105-1368	Cart Mount	20:1	B6 D Super-Slave	25'	102-2500^ HVLP
105-1395	Wall Mount	14:1	B5 D Super-Slave	25'	102-2500^ HVLP
105-1396	Wall Mount	20:1	B6 D Super-Slave	25'	102-2500^ HVLP
105-1195	Wall Mount	14:1	B5 D Super-Slave	25'	202-755* HVLP

^ Binks Century 102-2500 HVLP gun

* Binks 202-755 HVLP gun



Binks Super-Slave
Part No. 105-1358

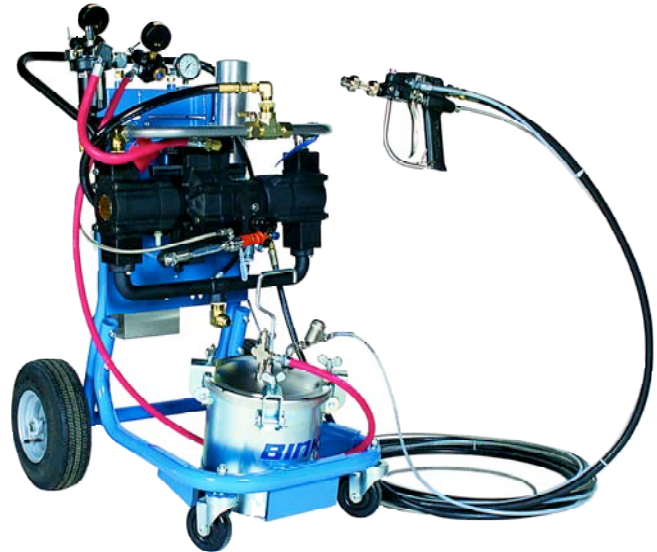
Resin Application Systems - Internal Mix

Binks Unison 8:1 - Internal Mix LEL Wet-Out Systems

MACT-compliant Low Emission Laminators

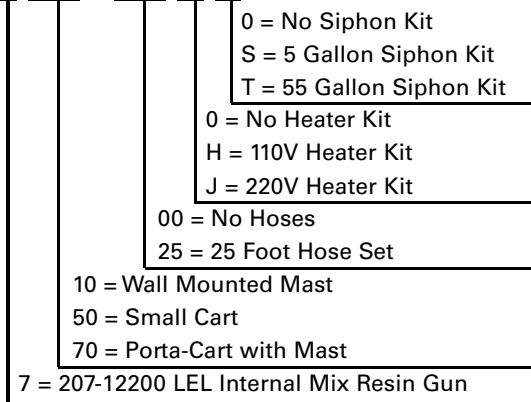
Binks Unison LEL™ Internal Mix Systems Complete MACT-compliant systems featuring the Internal Mix LEL gun and Binks Unison precision catalyst metering pump. Internal Mix LEL systems are easy to use and offer repeatability you can count on. Resin cartridge needle assembly can be changed in less than five minutes. Varied pumps and mounting styles are available for maximum versatility.

- MACT-compliant Binks 207-12200 LEL gun
- Easy maintenance - one touch easy flush
- Infinitely variable catalyst delivery from .5% to 3.5%



Binks Unison 215-750-250S system shown with optional pan.

215 - 7 XX - XX X X *



* Note: not all of the 215 combinations indicated above are available.

The Systems that are available for 5 day delivery are as follows:

Binks Unison 8:1 system with a wall mounted mast.
215-710-0000

Binks Unison 12:1 system with a small cart.
215-750-0000
215-750-250S

Binks Unison 12:1 system with a porta-cart and mast.
215-770-000
215-770-250

Non-Atomized, Resin LEL Chopper Systems- Internal mix

Binks Unison 8:1 - Internal Mix LEL Chopper Systems

Binks Unison LEL™ Systems

Complete MACT-compliant systems featuring the Binks internal mix LEL gun and Binks Unison precision catalyst metering pump. All Binks internal mix LEL systems are easy to use and offer repeatability you can count on. Resin cartridge needle assembly can be changed in less than five minutes. Varied pumps and mounting styles are available for maximum versatility.

- MACT-compliant internal mix LEL (internal mix)
- Easy maintenance - one touch easy flush
- Infinitely variable catalyst delivery from .5% to 3.5%

215 - 8 XX - XX X X

			0 = No Siphon Kit
			S = 5 Gallon Siphon Kit
			T = 55 Gallon Siphon Kit
			0 = No Heater Kit
			H = 110V Heater Kit
			J = 220V Heater Kit
		00 = No Hoses	
		25 = 25 Foot Hose Set	
	30 = Wall Mounted Boom		
	50 = Small Cart		
	80 = Cart, Mast, & Boom		
8 = 207-12240 LEL Internal Mix Chop Gun			

* Note: not all of the 215 combinations indicated above are available.

The Systems that are available for 5 day delivery are as follows:

Binks Unison 8:1 system with wall mounted mast and chopper boom.

215-830-0000
215-830-250T

Binks Unison 8:1 system with a small cart.

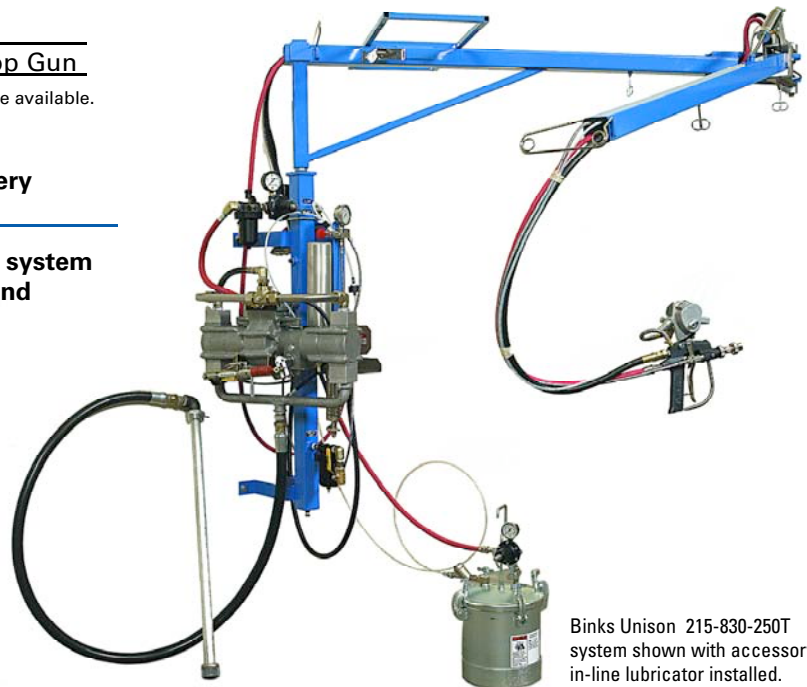
215-850-0000

Binks Unison 8:1 system with cart, mast and boom.

215-880-000
215-880-250
215-880-25H
215-880-25J



Binks Unison 215-880-250 system shown with accessory in-line lubricator installed.



Binks Unison 215-830-250T system shown with accessory in-line lubricator installed.

Binks Super-Slave 5.5:1 Internal Mix LEL Chopper System

PART NUMBER	DESCRIPTION	PUMP	HOSES	CUTTER	BOOM	FLUSH TANK	GUN / MIX
105-5201*	Cart Mast Boom Chopper	Binks 5.5:1 Comet 3D	25'	Yes	Yes	Yes	207-12240 / Int.

*105-system not shown .

Air Atomized Granite Spray Systems

Top Quality "Grani-Tec" Quickly, Easily

Binks Grani-Tec Spray Systems enable you to produce granite-effect gel coat finishes directly from the shipping container. Unlike other systems that continually clog and deliver uneven spray patterns, the Binks system...

- Has an automatic recirculation mode to ensure consistently high quality production
- No static pressure
- Delivers fast, predictable spray patterns
- Allows rapid triggering
- Works right out of the box - no set-up, (205-1000 Grani-Tec Outfit only)

PART NUMBER	DESCRIPTION	RATIO	PUMP	HOSES	GUN
205-1000	Binks Grani-Tec	4.5:1	Exel Pump ●	18'	202-1055 (Recirculating)
205-1000-B	Binks Grani-Tec	4.5:1	Exel Pump ●	18'	7N (68SS x 302) /Int.

PART NUMBER	DESCRIPTION	TANK SIZE	HOSES	GUN / MIX
105-1084-2	Binks Grani Coat	2 Gal.	15'	7N (68SS x 302) /Int.
105-1084-5	Binks Grani Coat	5 Gal.	25'	7N (68SS x 302) /Int.
105-1084-10	Binks Grani Coat	10 Gal.	25'	7N (68SS x 302) /Int.

● 4.5:1 ratio with Exel stainless steel pump.



Binks 205-1000 system shown with optional pan.



Binks 105-1084-2

Binks 10 Gallon or 2 Quart Air Atomized External Mix Systems

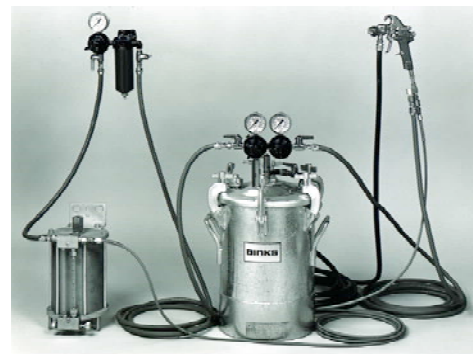
Catalyst delivered by and through an air atomized gel coat outfit is intimately mixed with the resin so the sprayed film is a clear and air free gel coat. The Binks 105-1138 lends itself to multi-color operation.

Features

- Ideal where operation is new and/or production is intermittent
- Spray gun catalyzes externally. No flushing necessary
- External catalyst delivery is clearly visible to the operator.
- Proven reliability, all components, Moderate in cost
- Quick color change capability
- Simple and safe to operate, Low maintenance,
- Large selection of nozzles to handle a variety of materials.
- Comprises the basic element of a multicolor system
- 105-1138 includes air filtration, extractor and control components

PART NUMBER	DESCRIPTION	TANK SIZE	HOSES	GUN / MIX
105-1138	Binks Gel-Coat	10 Gal.	25' *	7N /Ext. (68SS x A68PB)
105-1236	Binks Gel Coat with air control valve	2 Quart Cup	5' *	2001GW /Ext. (68SS x 66SD)

* Air and fluid hose assemblies supplied with outfits



105-1138

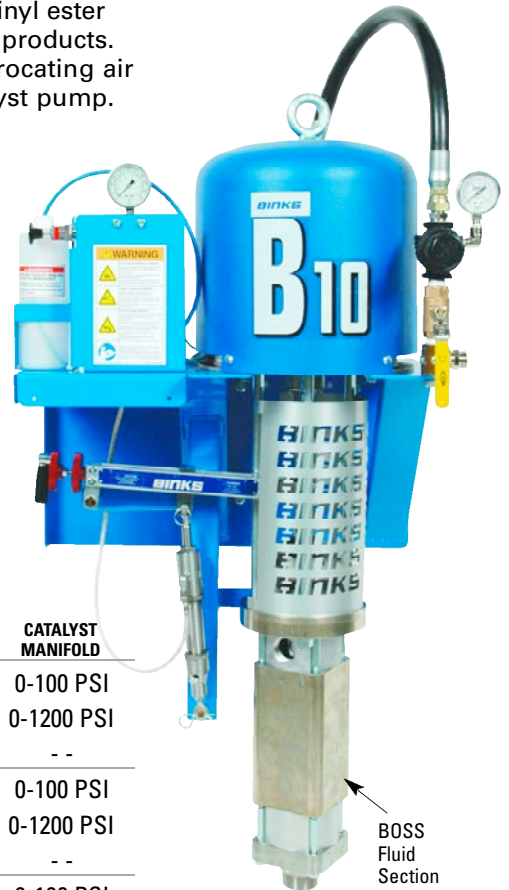


105-1236

High Volume Resin Pump

The **BOSS™** pump is designed for the high-volume supply of polyester or vinyl ester resins and organic peroxide catalyst used in the manufacture of fiberglass products. **BOSS™** supplies the resin via a 2-ball fluid section connected to a reciprocating air motor. The catalyst is supplied by a stainless steel adjustable ratio catalyst pump.

- Catalyst Ratio, Adjustable - 0.5-3.5%, Catalyst Connection 1/4" NPT(f) Inlet & Outlet
- Resin Flow@ Max. Continuous. - 5 GPM@20 Cycles per minute.
- Resin Connection - Inlet 1-1/2" NPT(f) or 2" NPT(m), Outlet 1" NPT(f)
- Air Inlet Pressure - 25-90 PSIG (2.1 to 6.2 bar),
- B-10 Air Consumption 85 SCFM@90 PSI and 20 Cycles per. minute
- B-8 Air Consumption 42 SCFM@90 PSI and 20 Cycles per. minute
- B-6 Air Consumption 20 SCFM@90 PSI and 20 Cycles per. minute
- Air Motor x Manifold Inlet Connections - 3/4" NPT(m) x 1/2" NPS(m)
- Fluid Pressure Range - 120 to 1180 psi (22.5 to 80.3bar)
- Output: 15 US gallons per minute. (max) @60 cycles per minute. (56.8 liter/minute.)
- Max. recommended continuous cycles - 5 gallons per minute. (19 liters/minute)



BOSS

PART NUMBER	DESCRIPTION	RATIO	FLUID PRESSURE	PUMP	CATALYST MANIFOLD
103-1778	BOSS Pump (External mix)	13.2:1	330-1180 PSI	Binks B-10	0-100 PSI
103-1777	BOSS Pump (Internal mix)	13.2:1	330-1180 PSI	Binks B-10	0-1200 PSI
103-1779	Bare Pump and BOSS Fluid Section	13.2:1	330-1180 PSI	Binks B-10	--
103-1783	BOSS Pump (External mix)	8:1	200-720 PSI	Binks B-8	0-100 PSI
103-1782	BOSS Pump (Internal mix)	8:1	200-720 PSI	Binks B-8	0-1200 PSI
103-1781	Bare Pump and BOSS Fluid Section	8:1	200-720 PSI	Binks B-8	--
103-1786	BOSS Pump (External mix)	4:1	120-420 PSI	Binks B-6	0-100 PSI
103-1785	BOSS Pump (Internal mix)	4:1	120-420 PSI	Binks B-6	0-1200 PSI
103-1784	Bare Pump and BOSS Fluid Section	4:1	120-420 PSI	Binks B-6	--
103-1787	BOSS Fluid Section* assembly - No air motor or air control				

Accessories for the BOSS Pump

PART NUMBER	DESCRIPTION	PART SHEET
41-12304	B-10 air motor assembly	77-2214
41-12303	B-8 air motor assembly	77-2213
41-12302	B-6 air motor assembly	77-2228
101-9200	Bare resin pump assembly	77-2829
101-9220	Bare catalyst pump assembly	77-2830
101-9280	Five ft. catalyst siphon hose with inlet filter	N/A
101-9283	Two gallon catalyst bottle/ bracket & hose and ball valve	77-2835
101-9284	Pulsation chamber with drain valve	77-2836
42-175	Pump packing lubricant - 1 qt.	N/A
103-1241	Stainless steel catalyst filter 100 mesh	77-2015
41-11150	Pump protector	77-2257
101-9251	Air Control Assembly	77-2831

Spare Parts for the BOSS Pump

PART NUMBER	DESCRIPTION	PART SHEET
106-1262	Soft seal kit for resin pump (101-9200)	77-2829
106-1263	Complete repair kit for resin pump (101-9200)	77-2829
106-1264	Complete repair kit for catalyst pump (101-9220)	77-2830
41-13129	B-10 air motor repair kit	77-2214
41-13128	B-8 air motor repair kit	77-2213
41-13127	B-6 air motor repair kit	77-2228

FRP Spray Gun Selection Guide

MACT-compliant low emission laminators

- Uniform, consistent, reliable mix
- Internal or External mix of catalyst and resin available
- One-touch flush for easy cleaning
- Cartridge resin needle and seat assembly
- Resin cartridge needle assembly changes out in less than five minutes

All spray guns utilize similar parts and components to deliver the finish materials.

When the trigger is engaged, it makes contact with the air valve stem which releases the air. Then the trigger pulls the needle out of the fluid tip, allowing the material to flow through the orifice of the fluid tip where it is then atomized.

This chart will help you quickly assess which Binks spray gun is suitable for your specific application. First, decide what type of spray gun you need. Then, under the heading that meets these criteria, find the usage description that best matches your application.

	Gel Coat	Wet-Out	Chop	Grani-Coat	Filled Resin	2K Adhesives	External Mix	Internal Mix	Touch-Up	Conventional Spray	HVLP Spray
AAA Air-Assist Airless HVLP											
102-2400		●				●					●
102-2500	●					●					●
102-2545				●		●					●
102-2455			●			●					●
202-755	●	●				●					●
207-12344	●						●				
LEL											
207-12200		●						●			
207-12240			●					●			
102-3600		●				●					
102-3610	●					●					
102-3655			●			●					
102-3650		●		●		●					
102-3665			●		●	●					
HVLP											
MACH 1PC					●	●					●
MACH 1PCX	●	●		●		●					●
Conventional Spray											
7N	●	●	●			●	●		●		●
2001GW	●	●				●		●	●		●
202-1055			●			●					●
Airless Mavrick	■					●					

■ Consult Industrial Finishing for your application.

FRP Gun Information

Please specify spray tips when ordering Binks FRP spray guns.

The tip chart below identifies respective tips that you will need to include with your order.

	SPRAY GUN	PART #	DESCRIPTION	PART SHEET	SEAT	FEED TUBE	TIP SERIES
Internal Mix Guns	GEL-COAT	207-12344	A-AA Gun ▲	77-2809	S *	1/4"	211
	WET-OUT	207-12200	LEL Resin Gun ▲	77-2753	S *	3/8"	212
	CHOPPER	207-12240	LEL Resin Gun	77-2753	S *	3/8"	212
External Mix Guns	GEL-COAT	102-2500	Century HVLP Gun ▲	77-2520	H **	1/4"	108
		102-2545	Century Vinyl Ester Gun ▲	77-2520	H **	3/8"	108
		102-3610	Century LEL Gun ▲	77-2772	H **	1/4"	118
		202-755	A-AA HVLP Gun ▲	77-2756	S *	1/4"	211
	WET-OUT	102-2400	Century A-AA HVLP Gun ▲	77-2520	S *	1/4"	108
		102-3600	Century LEL Resin Gun ▲	77-2772	S *	1/4"	118
		102-3650	Century LEL Resin Gun ▲	77-2772	H **	3/8"	118
	CHOPPER	102-2455	Century A-AA HVLP Gun	77-2520	S *	1/4"	108
	CHOPPER	102-3655	Century LEL Gun	77-2772	S *	1/4"	118
	CHOPPER	102-3665	Century LEL Gun	77-2772	H **	3/8"	118

Note: S * is Plastic Seat H ** is Carbide Seat ▲ Without Chopper

Standard Spray Guns, Manual and Touch-up

- MACH 1 - Lightweight HVLP spray gun
- 2001 - Lightweight, conventional gun for touch-up/repair of gel coat and FRP wet-out
- 115 - Lightweight touch-up spray gun
Optional 81-540 8 oz. Siphon Cup, 1/4" NPS(F) threads (for 115 gun only)

MODEL	DESCRIPTION
Mach 1 HVLP	97 x 97P
2001	68SS x 68PB
2001	66SS x 66SK
115 Touch-up gun	78SS x 78SD



FRP Spray Guns for Gel Coat and Resin Systems

Binks HVLP - (Air Assisted-Airless)

- Fully complies with all HVLP requirements
- Optimum catalyzation
- External mix, no flush
- Works with heavy materials
- Low maintenance

MODEL	DESCRIPTION
102-2400 *	Binks Century HVLP Wet Out
102-2455	Binks Century HVLP Chop
102-2500 *	Binks Century HVLP Gel Coat
102-2545 ^	Binks Century Vinyl Ester Gel Coat
202-755 #	Binks A-AA HVLP Gel Coat
207-12344 +	Binks A-AA Gel Coat

* Part Sheet 77-2520 ^ Part Sheet 77-2520
Part Sheet 77-2473 + Part Sheet 77-2809



102-2500



202-755

Binks HVLP - (Air Assisted-Airless)

- Hydraulically assisted air atomization
- Field tested reliability
- External mix, no flush

Binks LEL

- MACT-compliant - non atomizing technology
- Easy maintenance
- Internal mix
- One-touch flush

MODEL	DESCRIPTION
207-12200 *	Binks LEL Wet Out - Resin
207-12240 *	Binks LEL Chop - Resin
102-3600 ^	Binks Century LEL Wet Out-Resin
102-3610 ^	Binks Century LEL Gel Coat
102-3655 ^	Binks Century LEL Chop
102-3650 ^	Binks Century LEL Wet Out-Resin
102-3665 ^	Binks Century LEL Chop

* Part Sheet 77-2753 ^ Part Sheet 77-2772



207-12240

102-3610

Binks Century LEL

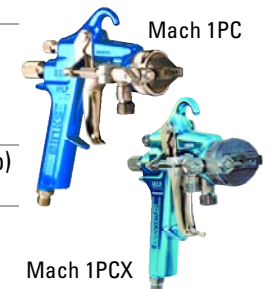
- MACT-compliant - non atomizing technology
- Optimum catalyzation
- External mix - no flush
- Reduces over-spray
- Low maintenance

Binks Mach 1PC & Mach 1PCX HVLP

- Mach 1PC injects catalyst at nozzle exit - (atomized)
- Mach 1PCX equipped with a side injector - (non-atomized)

MODEL	DESCRIPTION
6122-1601-1*	Mach 1PC - 92 X 92PC
6122-2304-1*	Mach 1PC - 909 X 905PC
6122-2701-1*	Mach 1PC - 92F X 92PC
6122-2802-1*	Mach 1PC - 94F X 91PC
6907-0000-0 ~	MACH 1PCX Assembly (less setup)
6907-2801-7 ~	MACH 1PCX - 94F x 91PC

* Part Sheet 77-2624 ~Part Sheet 77-2687



Mach 1PC

Mach 1PCX

7N Gel Coat Gun

- Ideal for gel-coat touch-up, repair, and production
- External mix ♦, 7N gun for gel coat

MODEL	DESCRIPTION
7N Gun ♦	68SS X A68PB

Part Sheet 77-2079



7N gun

2001GW

2001GW Gun

- Ideal for touch-up and repair

MODEL	DESCRIPTION
2001 GW	66SS x 66SD /Ext mix
2001 GW	68SS x 68PB /Ext mix

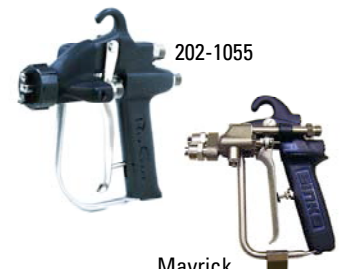
Part Sheet 77-2353

Binks Grani-Gun (202) & 7N Grani-Coat

- External re-circulating for granite systems ♦
- External mix, no flush ♦
- Internal mix ▲, 7N gun for grani-coat

MODEL	DESCRIPTION
202-1055 ♦	Binks Grani-Gun (202)
7N Gun ▲	68SS X 302 (Grani-Coat)

Part Sheet 77-2840



202-1055

Mavrick Gun

- External mix, Airless
- Plural component spray gun
- Optional chopper available

MODEL	DESCRIPTION
Mavrick Gun	6710-0000-0 (Less Tip) (order tip separately)

Part Sheet 77-2070

FRP Accessories for Gel Coat and Resin Systems

CUTTERS

Both cutters have a built-in blower, motor control manifold and pattern control adjustment, are capable of pulling 1 to 3 strands of glass, and cutting roving lengths from 1/2" to 2 in. long.

- The Model 201-510 cutter is designed for medium to high production applications. Part Sheet 77-2475
- The Model 201-509 heavy duty cutter is gear driven and designed for long roving runs. Part Sheet 77-2474



201-510



201-509

CATALYST TANKS

- Model 207-11029 Catalyst Injector Tank (C400-N) is a 1 gallon stainless steel pressure tank for metering an accurate flow of MEKP catalyst. It has a safety filler cap, accurate flow control needle valve, precision flow meter and material sight tube. Part Sheet 77-2792
- Model 207-11603 Catalyzer Tank (AD-4) is same as above except catalyst is injected into the atomizing air. Part sheet 77-2792



207-11029



207-11603

5 ft. BOOM EXTENSIONS - 207-12382

- 5ft. boom extension. Part sheet 77-2837

12 ft. BOOMS▲

- 203-1607 12ft. Wall Mtd. Mast Boom for Gel-Coat
- 203-1608 12ft. Wall Mtd. Mast Boom for Chop
- 203-1609 12ft. Wall Mtd. Boom
▲Part sheet 77-2311

SUPER-SLAVE CATALYST PUMP Assembly

- 101-2053 (Bare Pump) *
 - 101-1950 (High Pressure) *
 - 101-2098 (Medium Pressure) *
 - 101-2021 (Low Pressure -Shown) *
- * Part Sheet 77-2728

Super-Slave
Catalyst Pump



UNISON CATALYST PUMP Assembly

- 207-12291 (double acting Slave Pump)
- 207-11974 (single acting Slave Pump)
Part Sheet 77-2798

Unison
Catalyst
Pump



RESIN ROLLERS

Individual Wheel Rollers

- 207-10688 1 1/4" x 3 in.
- 207-10690 1 1/4" x 6 in.

Slim Fin Roller

- 207-10715 1/2" x 3 in.
- 207-10745 1/2" x 6 in.



ADDITIONAL FRP ACCESSORIES...

- 102-3614 Ratio Check Kit for Century LEL
- 102-3620 Century LEL upgrade Kit - Resin
Century AA/A upgrade kit to LEL/FRP
- 102-3621 Century LEL upgrade Kit - Gel-Coat
Century AA/A upgrade kit to LEL/Gel-Coat
- 207-11692-1 Bung Adapter for 1" Siphon kit
- requires a 237-621 Thumb Screw
- 207-12278 Pan for the small cart
- 237-578 Lubricator

Catalyst, Chopper, Solvent, Resin, Tubing and Air and Fluid Hose

■ Catalyst Hose Assemblies

SIZES ID	WORKING PRESSURE	ASSEMBLY PART NO.	BULK HOSE PART NO.	CONNECTION PART NO.	THREAD SIZE	LENGTH HOSE
1/8" ID	100 PSI	102-3028	71-201	102-3031	1/4" NPS (F) SW	25 ft
1/8" ID	100 PSI	102-3029	71-201	102-3031	1/4" NPS (F) SW	35 ft
1/8" ID	100 PSI	102-3030	71-201	102-3031	1/4" NPS (F) SW	50 ft
5/16" ID	250 PSI	71-2732	71-508	72-1646	1/4" NPS (F) SW	15 ft
5/16" ID	250 PSI	71-2734	71-508	72-1646	1/4" NPS (F) SW	25 ft
5/16" ID	250 PSI	71-2735	71-508	72-1646	1/4" NPS (F) SW	50 ft
3/16" ID	3000 PSI	207-12305-4	N/A	JIC 4(F) SW	7/16" X 20	25 ft
3/16" ID	3000 PSI	207-12305-7	N/A	JIC 4(F) SW	7/16" X 20	35 ft
3/16" ID	3000 PSI	207-12305-6	N/A	JIC 4(F) SW	7/16" X 20	50 ft

■ Chopper Hose Assemblies

SIZES ID	WORKING PRESSURE	ASSEMBLY PART NO.	BULK HOSE PART NO.	CONNECTION PART NO.	THREAD SIZE	LENGTH HOSE
5/16" ID	250 PSI	71-2803	71-20000	72-1317	1/4" NPS (F) SW	25 ft
5/16" ID	250 PSI	71-2810	71-20000	72-1317	1/4" NPS (F) SW	35 ft
5/16" ID	250 PSI	71-2804	71-20000	72-1317	1/4" NPS (F) SW	50 ft

■ Solvent Flush Hose

SIZES ID	WORKING PRESSURE	ASSEMBLY PART NO.	BULK HOSE PART NO.	CONNECTION PART NO.	THREAD SIZE	LENGTH HOSE
1/4" ID	250 PSI	207-11512-3	71-227	72-1687	1/4" NPS (F) SW	25 ft
1/4" ID	250 PSI	207-11512-5	71-227	72-1687	1/4" NPS (F) SW	35 ft
1/4" ID	250 PSI	207-11512-8	71-227	72-1687	1/4" NPS (F) SW	50 ft

■ Resin Hose Assemblies

SIZES ID	WORKING PRESSURE	ASSEMBLY PART NO.	BULK HOSE PART NO.	CONNECTION PART NO.	THREAD SIZE	LENGTH HOSE
5/16" ID	3000 PSI	71-7504	N/A	--	1/4" NPS (F) SW	25 ft
5/16" ID	3000 PSI	71-7508	N/A	--	1/4" NPS (F) SW	35 ft
5/16" ID	3000 PSI	71-7505	N/A	--	1/4" NPS (F) SW	50 ft
3/8" ID	3000 PSI	71-8424	N/A	--	3/8" NPS (F) SW	25 ft
3/8" ID	3000 PSI	71-8430	N/A	--	3/8" NPS (F) SW	35 ft
3/8" ID	3000 PSI	71-8425	N/A	--	3/8" NPS (F) SW	50 ft
1/2" ID	3000 PSI	207-10941-2	N/A	--	JIC 8(F) SW	25 ft
1/2" ID	3000 PSI	207-10941-11	N/A	--	JIC 8(F) SW	35 ft
1/2" ID	3000 PSI	207-10941-5	N/A	--	JIC 8(F) SW	50 ft

■ Assist Air Tubing

SIZES ID	WORKING PRESSURE	ASSEMBLY PART NO.	BULK HOSE PART NO.	CONNECTION PART NO.	THREAD SIZE	LENGTH HOSE
1/4" ID	250 PSI	54-4989 w/ no fittings	54-4987	54-4976	Adapter Tube 1/4 NPT (f)	25 ft
1/4" ID	250 PSI	71-4800 w/no fittings	54-4987	54-4976	Adapter Tube 1/4 NPT (f)	35 ft
1/4" ID	250 PSI	71-4801 w/ no fittings	54-4987	54-4976	Adapter Tube 1/4 NPT (f)	50 ft

Air and Fluid Hose Assemblies

Assembled air and fluid hose with connections - I.D. Sizes: 5/16", 3/8"

■ Air Hose Assemblies - (Low Pressure - 250 PSI)

SIZES I.D.	HOSE WORKING PRESSURE	LENGTH OF HOSE	ASSEMBLY PART NO.	BULK HOSE NUMBER	CONNECTION THREAD SIZE
5/16" I.D.	250 PSI	25 ft	71-1205	71-11000	1/4" NPS(f) ♦
5/16" I.D.	250 PSI	50 ft	71-1206	71-11000	1/4" NPS(f) ♦

■ Fluid Hose Assemblies - (Low Pressure - 500 PSI)

3/8" I.D.	500 PSI	25 ft	71-3303	71-282	3/8" NPS(f) ♦
3/8" I.D.	500 PSI	50 ft	71-3304	71-282	3/8" NPS(f) ♦

♦ Connections: Re-useable, plated brass, three piece.

Standard Accessories and Optional Equipment

AGITATORS

- 202-55-2 2 Paddle SS *
1.5 hp Gear Drive 55 gallon drum,
Agitator and Cover (shown below)
- 202-55-4 4 Paddle SS *
1.5 hp Gear Drive 55 gallon drum,
Agitator, and Cover (not shown)
* Part Sheet 77-2814



2 GAL. PT ASME CODE PRESSURE TANKS

Zinc Plated for solvent based coatings

- 83C-220 - Two Gallon PT ASME pressure tank with dual regulation, no agitation, 3/8" NPS fluid outlet, 1/4" NPS air inlet, 80 PSI maximum working pressure. Catalog A83-11. Part Sheet SBBI-21-044



PUMP ACCESSORIES

- 41-11150 Pump protector for Binks "B" series air motors Adjustable to 150 CFM, 20-125 PSIG Part Sheet 77-2257
- 845001 Fluid Regulator and Gauge 100 to 800 PSI Working Pressure Max Inlet Pressure 1250 PSI 1000 lb. Gauge Part Sheet 84500X



845001



41-11150

CUPS

MODEL	DESCRIPTION
■ 80-600 ^	2 Quart SG2 Plus Wide Mouth Pressure Cup ^
■ 80-651 *	2 Quart SG2 Plus Rotary Wide Mouth Pressure Cup *
■ 80-295 #	2 Quart Steadi-Grip Pressure Cup
■ 81-800 ~	1 Quart Siphon Cup

^Part Sheet 77-2841 *Part Sheet 77-2842 #Part Sheet 77-2823 ~Part Sheet 77-2794
^Non-Agitated *Rotary Agitator #Non-Agitated



80-600 ^
No Agitation



80-651 *
Rotary Agitator



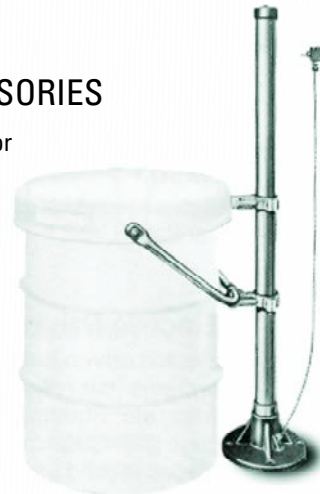
80-295 #



81-800 ~

55 GAL. DRUM ACCESSORIES

- 41-9000 Single post elevator used with 55 gallon cover mounted pump units. Part Sheet 77-1392



FLUID HEATERS

- High Pressure, lightweight (18 lbs.), compact and explosion proof construction. Working capacity to 5000PSI (340 bars) and with adjustable thermostatic control from 60°F to 250°F.
- 830000 120V 16.6 Amp SS Heater, 2000 Watt
- 830001 240V 8.3 Amp SS Heater, 2000 Watt
- 830002 440V 4.5 Amp SS Heater, 2000 Watt



FLUID HEATER KITS

Heater Kit for Unison systems

- 207-12351 110V *
 - 207-12352 220V *
- * Part Sheet 77-2812

BULK TRANSFER DIAPHRAGM PUMPS

- Bulk transfer/high volume pumps for moving resins. 1 1/2", 1:1, 100 psi, 0.64 GPM per cycle, 38 GPM@60 CPM, 90 GPM@ Max CPM.

MODEL	BODY	SEATS	BALLS	DIAPHRAGM
818810	SS	SS	SS	PTFE
818812	Alum.	SS	PTFE	PTFE

Catalog INFG-1



AIR FILTERS & COALESCERS

- HAF-502 Centrifugal Air Filter Unit, 100 CFM @ 90 PSI Part Sheet SB 6-146
- HFRL-512 80 CFM Coalescer & Filter with (2) Regulators, Part Sheet SB 6-148



108 Tungsten Carbide Tip Chart for Century Series Guns

Assembly Part No.	Orifice Size	Spray Width @ 12"	I.D. No.
108-91507	0.015	7"	1507
108-91807	0.018	7"	1807
108-91809	0.018	9"	1809
108-92107	0.021	7"	2107
108-92109	0.021	9"	2109
108-92111	0.021	11"	2111
108-92113	0.021	13"	2113
108-92307	0.023	7"	2307
108-92309	0.023	9"	2309
108-92607	0.026	7"	2607
108-92609	0.026	9"	2609
108-92612	0.026	12"	2612
108-93107	0.031	7"	3107
108-93109	0.031	9"	3109
108-93605	0.036	5"	3605
108-93607	0.036	7"	3607
108-93609	0.036	9"	3609
108-94107	0.041	7"	4107
108-94109	0.041	9"	4109
108-94405	0.044	5"	4405
108-94407	0.044	7"	4407
108-94409	0.044	9"	4409
108-95107	0.051	7"	5107
108-95109	0.051	9"	5109
108-95707	0.057	7"	5707
108-96307	0.063	7"	6307

Additional tip seals available in 106-1177 Tip Seal Kit.

118 Fluid Nozzle Chart for Century LEL Series Guns

Part No.	Description	ID No.
118-81817	Gelcoat Nozzle .018 x 17°	1817
118-81820	Gelcoat Nozzle .018 x 20°	1820
118-81824	Gelcoat Nozzle .018 x 24°	1824
118-82117	Gelcoat Nozzle .021 x 17°	2117
118-82120	Gelcoat Nozzle .021 x 20°	2120
118-82124	Gelcoat Nozzle .021 x 24°	2124
118-82315	Gelcoat Nozzle .023 x 15°	2315
118-82317	Gelcoat Nozzle .023 x 17°	2317
118-82320	Gelcoat Nozzle .023 x 20°	2320
118-82324	Gelcoat Nozzle .023 x 24°	2324
118-82615	Gelcoat Nozzle .026 x 15°	2615
118-82617	Gelcoat Nozzle .026 x 17°	2617
118-82620	Gelcoat Nozzle .026 x 20°	2620
118-82624	Gelcoat Nozzle .026 x 24°	2624
118-83024	Gelcoat Nozzle .030 x 24°	3024
118-83615	Resin Nozzle .036 x 15°	3615
118-83618	Resin Nozzle .036 x 18°	3618
118-84615	Resin Nozzle .046 x 15°	4615
118-84618	Resin Nozzle .046 x 18°	4618
118-85215	Resin Nozzle .052 x 15°	5215
118-85218	Resin Nozzle .052 x 18°	5218
118-85220	Resin Nozzle .052 x 20°	5220
118-85224	Resin Nozzle .052 x 24°	5224
118-86012	Resin Nozzle .060 x 12°	6012
118-86215	Resin Nozzle .062 x 15°	6215
118-86218	Resin Nozzle .062 x 18°	6218
118-86220	Resin Nozzle .062 x 20°	6220
118-86224	Resin Nozzle .062 x 24°	6224

**Tungsten Carbide Tip Selection for
202-705, 202-715 & 202-755 Gun**

211-91525	.015 x 25 Deg.	211-92640	.026 x 40 Deg.
211-91540	.015 x 40 Deg.	211-93140	.026 x 40 Deg.
211-91825	.018 x 25 Deg.	211-93625	.036 x 25 Deg.
211-91840	.018 x 40 Deg.	211-93640	.036 x 40 Deg.
211-91850	.018 x 50 Deg.	211-94325	.043 x 25 Deg.
211-92125	.021 x 25 Deg.	211-94340	.043 x 40 Deg.
211-92140	.021 x 40 Deg.	211-95225	.052 x 25 Deg.
211-92150	.021 x 50 Deg.	211-95240	.052 x 40 Deg.
211-92340	.023 x 40 Deg.	211-95725	.057 x 25 Deg.
211-92350	.023 x 40 Deg.	211-96225	.062 x 25 Deg.

SYSTEM	CROSSOVER	DESCRIPTION
205-950-UB	215-650-250SF	Portable Gel-Coat System
205-950-UBH	215-650-25HSF	Portable Gel-Coat System
205-970-UB	215-610-250TF	Gel-Coat System Wall mount
205-970-UBH	215-610-25HTF	Gel-Coat System Wall mount
205-5000	215-710-250T	Wall mount LEL System
205-5001-B	215-430-250TF	Century LEL System
205-5001	215-830-250T	Internal MIX LEL System
205-5100	215-750-250S	Portable LEL System
205-5101	215-850-250S	Portable LEL CHOPPER System
205-5200	215-770-250T	Unison LEL Wet-Out Unit
205-5201	215-880-250	LEL Internal MIX System
205-5201-B	215-480-250F	Century LEL System

212 LEL Tip Chart for Binks LEL PC Guns

Part No.	Description	ID No.
212-84020	LEL TIP .040 x 20°	4020
212-84024	LEL TIP .040 x 24°	4024
212-84620	LEL TIP .046 x 20°	4620
212-84624	LEL TIP .046 x 40°	4624
212-84628	LEL TIP .046 x 28°	4628
212-85520	LEL TIP .055 x 20°	5520
212-85524	LEL TIP .055 x 24°	5524
212-85528	LEL TIP .055 x 28°	5528
212-86215	LEL TIP .062 x 15°	6215
212-86218	LEL TIP .062 x 18°	6218
212-86220	LEL TIP .062 x 20°	6220
212-86224	LEL TIP .062 x 24°	6224
212-86228	LEL TIP .062 x 28°	6228
212-87020	LEL TIP .070 x 20°	7020
212-87028	LEL TIP .070 x 28°	7028
212-88020	LEL TIP .080 x 20°	8020

MACT-compliant Technologies and Equipment



**CONTACTE CON LOS EXPERTOS DE TECNOLOGIA EN AIRE Y ASPERSION PARA UNA ASESORIA
PROFESIONAL**

www.tecnologiaenaireyaspresion.com

www.grupoequipa.com